

# Seneca Meadows

Job Number: 04-0458

Client: IESI

Project Value: Approximately \$755,000

Project Type: Wetland Mitigation/Landfill

Project Location: Waterloo, New York

Project Initiation Date: June 2004

Project Completion Date: Ongoing

Project Size: 1,200 acres

*AES is the prime for this project.*

## Project Goal

- Restore nearly 1,200 acres of sedge meadow, riparian landscapes, forested wetlands, and eventually create native grassland planting on the closed landfill.

## Project Statement

The Seneca Meadows, Inc. Landfill is the largest active landfill in New York, located about 45 miles east of Rochester, New York. Initially, Applied Ecological Services, Inc. (AES) had a defined, limited role which was to assist in finding wetland mitigation sites for the landfill expansion that was proposed to impact at least 70 acres of highly-altered wetlands. Upon visiting the site, AES soon found that most of the impacts to forested wetlands were not necessary and instead realized that hundreds of acres of forested wetlands could be enhanced as a part of the expansion project.

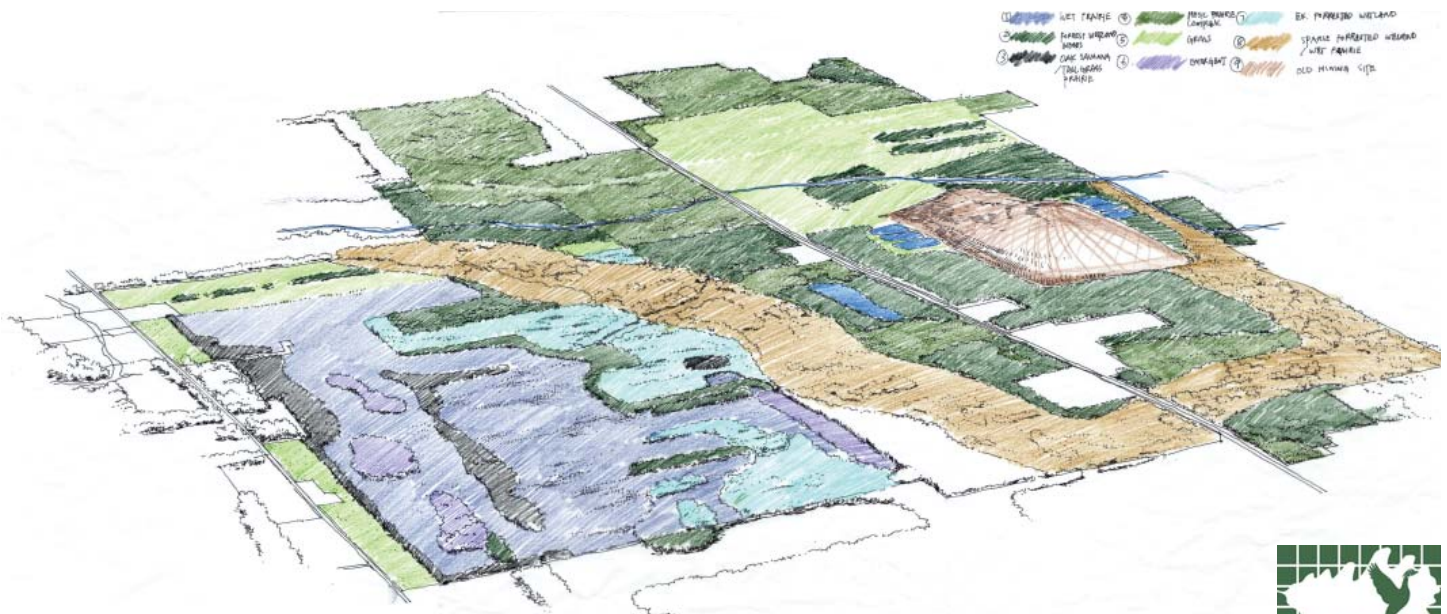
AES found an innovative way to restore 350 acres of these wetlands along with almost 600 acres of restoration acres of former drained agricultural lands and dewatered, forested wetlands as compensation for the 70 acres of impact to highly disturbed wetlands. This project received permits in July 2007 and ecological restoration will occur on approximately 1,200 acres that will be protected by a conservation easement to ensure that science-based management occurs on the land forever.

This project will also involve a nature center, trails, and beautiful scenery throughout, in a county where few such outdoor educational opportunities exist. Starting in the fall of 2007, AES will conduct enhancement work for the higher-quality forested wetlands, primarily focused on brushing and restoring hydrology.

Because of the creativity of the AES scientists in seeing different ways to work with the wetland impacts, AES has set a new precedent in the state of New York in the permitting of such large impact projects. The USEPA national office calls the project a model on how future large wetland impacts can address mitigation. The local community is happy about the project, the expansion, the nature center, and the new open-space system that they will have access to. This project is a great example of how AES's consulting, contracting, and nursery divisions can work together to provide the client, the community, and the environment with a win-win scenario.

## Current Status

This project is ongoing.



For more information, please visit [www.appliedeco.com](http://www.appliedeco.com)

